

# Improving Linkages between CEPF and World Bank Operations

## Latin America Workshop

Rio de Janeiro, Brazil

24 – 25 January, 2005



## History of CEPF

- Launched in August 2000
- Began grantmaking in January 2001
- Three initial donors – CI, GEF, WB
- MacArthur Foundation and Government of Japan join in 2001 and 2002



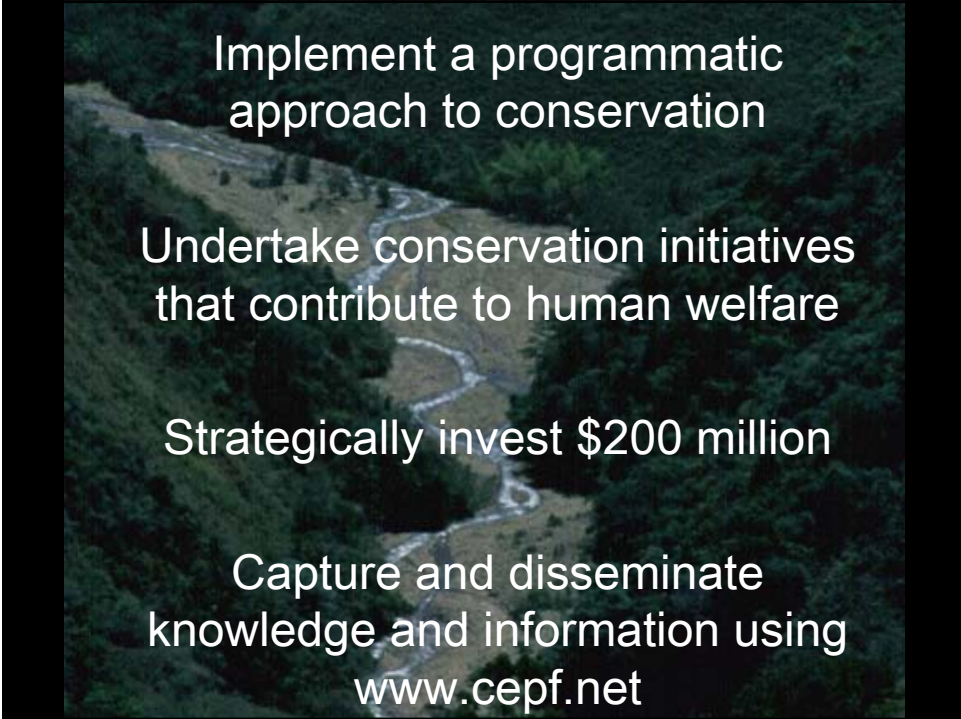


## Partnership Objectives

Advance conservation in biodiversity hotspots

Engage civil society and foster alliances

Provide complementarity to existing investments



Implement a programmatic approach to conservation

Undertake conservation initiatives that contribute to human welfare

Strategically invest \$200 million

Capture and disseminate knowledge and information using [www.cepf.net](http://www.cepf.net)

# What Makes CEPF Different?

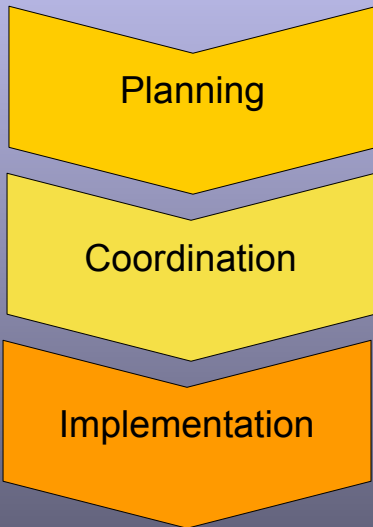
- Geographic prioritization
- Civil society
- Flexible funding
- Conservation outcomes
- Ecosystem profiles
- Coordination teams



## How We Work

Donor Council	Principles of each donor institution	Strategic guidance Strategy approval Soliciting add'l partners
Working Group	Technical experts from each donor partner	Input and guidance – operational and technical issues
CEPF staff	Management team, grant directors, support	Strategic planning Grantmaking / Monitoring Operations Fundraising
Local coordination teams	Locally knowledgeable organizations	CEPF's eyes and ears on the ground – local input guiding grantmaking

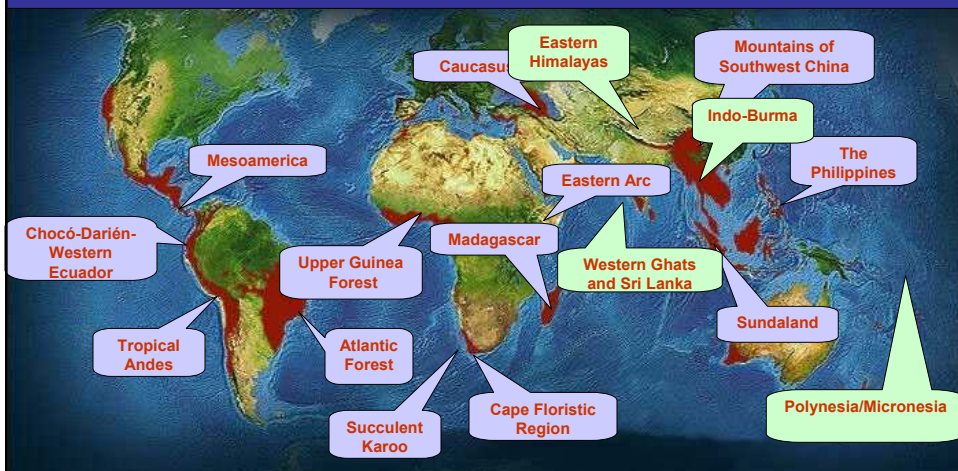
## How We Engage Civil Society



Civil society institutions:

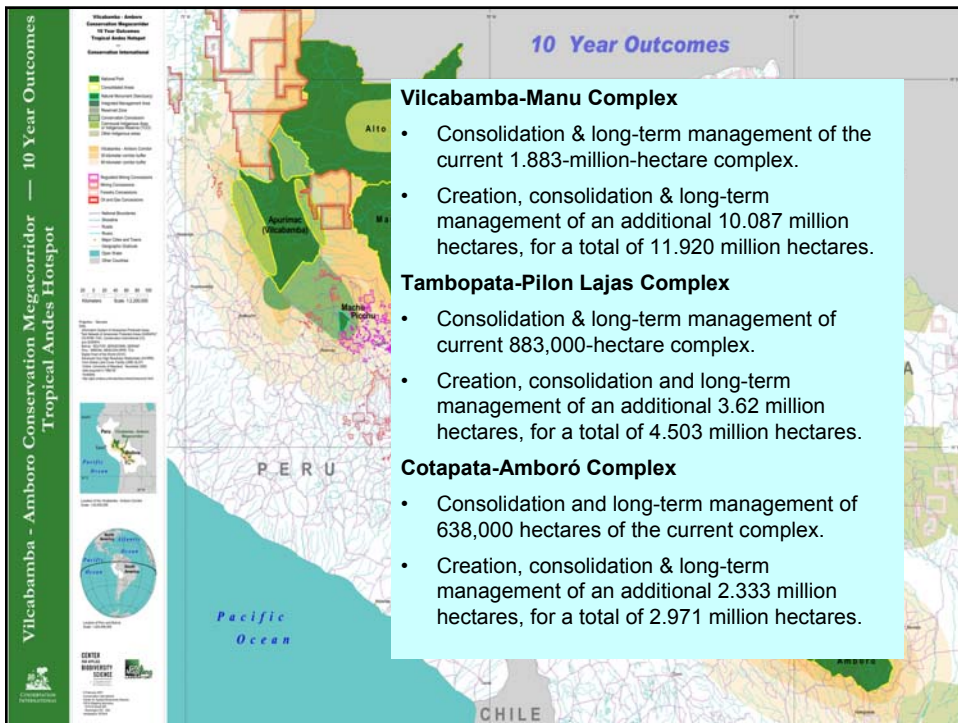
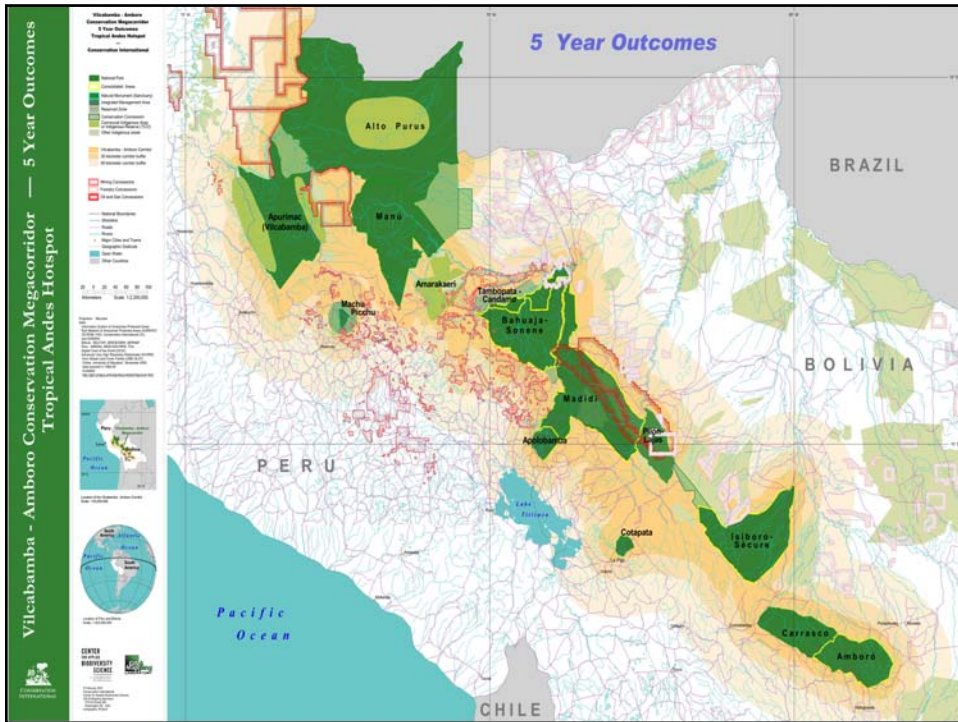
- lead strategy development
- define conservation outcomes
- bring local expertise to CEPF grantmaking
- broaden CEPF's local reach
- achieve conservation results towards CEPF's niche

## Targeting the Highest Priorities

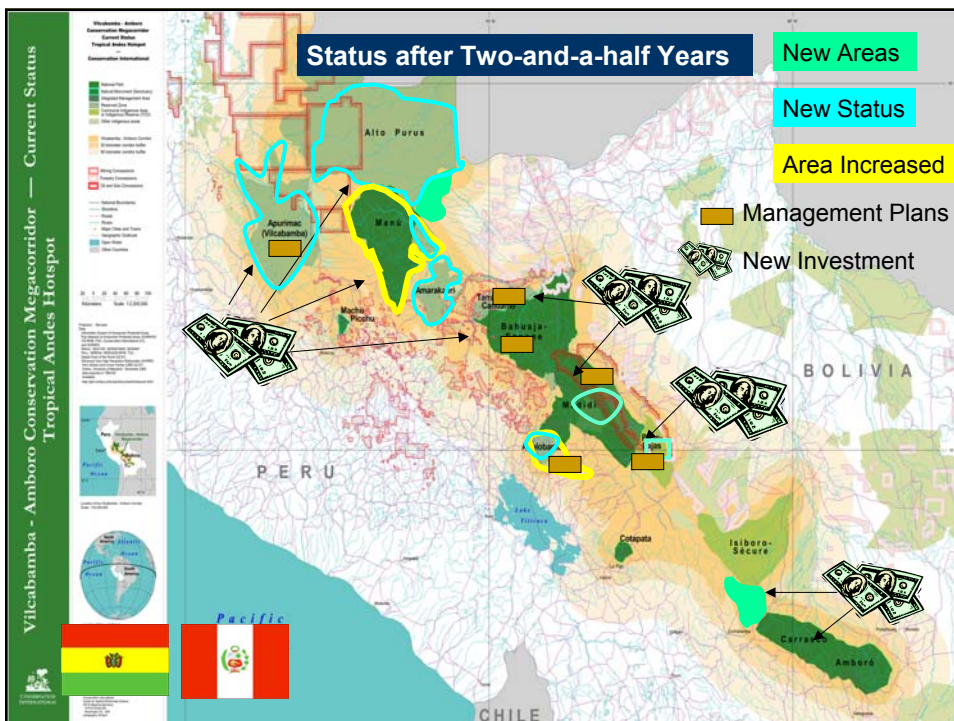
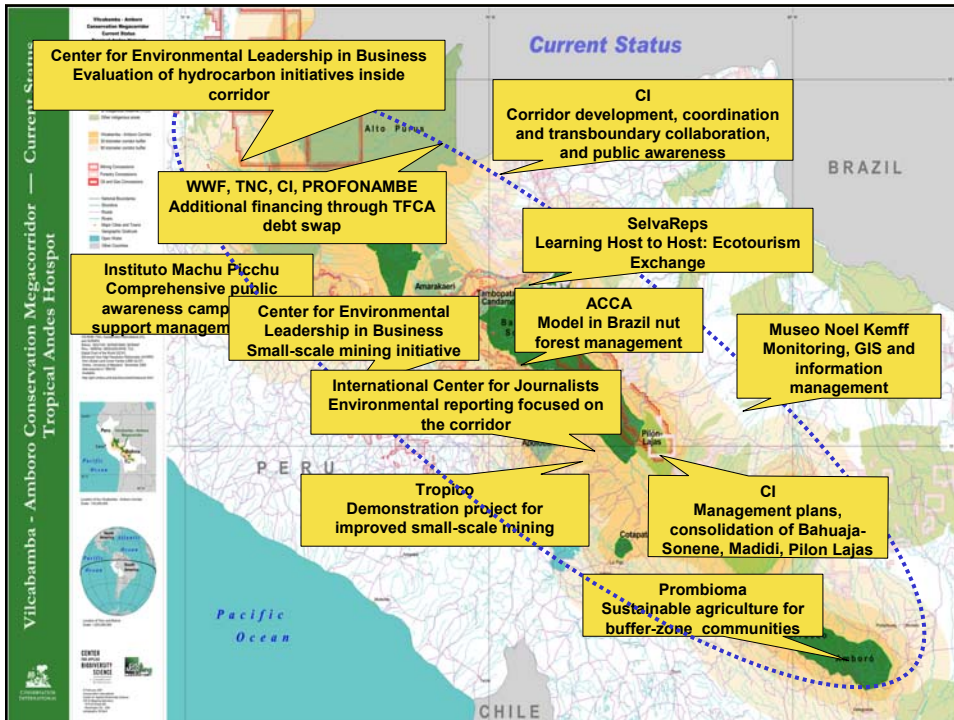


**CEPF is active in 14 regions with plans to expand to four more regions.**





- Vilcabamba-Manu Complex**
- Consolidation & long-term management of the current 1.883-million-hectare complex.
  - Creation, consolidation & long-term management of an additional 10.087 million hectares, for a total of 11.920 million hectares.
- Tambopata-Pilon Lajas Complex**
- Consolidation & long-term management of current 883,000-hectare complex.
  - Creation, consolidation and long-term management of an additional 3.62 million hectares, for a total of 4.503 million hectares.
- Cotapata-Amboeró Complex**
- Consolidation and long-term management of 638,000 hectares of the current complex.
  - Creation, consolidation & long-term management of an additional 2.333 million hectares, for a total of 2.971 million hectares.



# Fund Overview

5 donors and \$125 million in pledges

13 biodiversity hotspots, 14 active profiles

33 countries

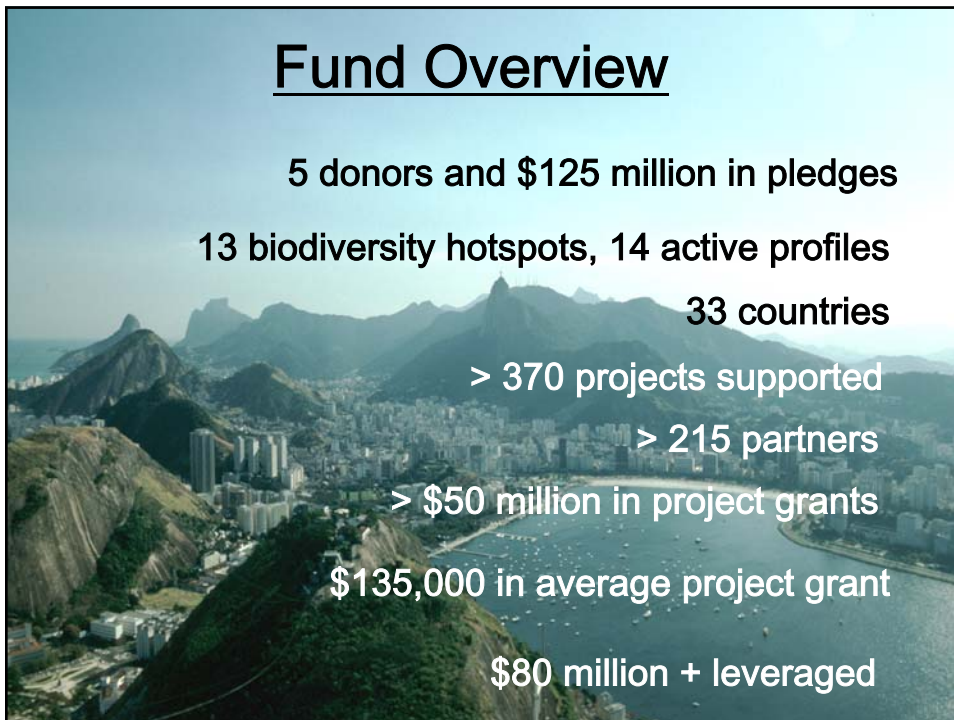
> 370 projects supported

> 215 partners

> \$50 million in project grants

\$135,000 in average project grant

\$80 million + leveraged



## CEPF's Impact in Latin America to Date

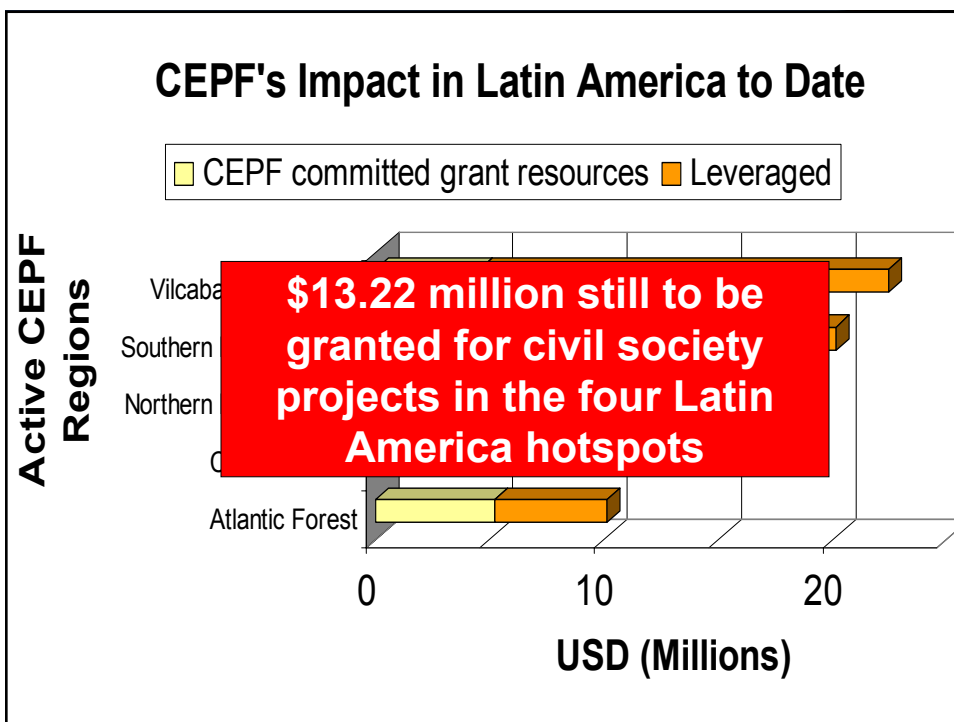
■ CEPF committed grant resources ■ Leveraged

Active CEPF Regions

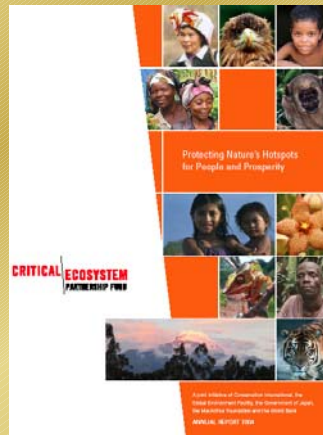
Vilcabamba  
Southern  
Northern  
Cerrado  
Atlantic Forest

**\$13.22 million still to be granted for civil society projects in the four Latin America hotspots**

0 10 20  
USD (Millions)



## Highlights from 2004



- Expanded to new regions – including Northern Mesoamerica
- Approved \$15.6 million in grants
- Supported 112 NGOs directly
- Enabled small grants programs to reach add'l 160 civil society partners

## Thoughts on the Future

**Scale-up leveraging and partnership opportunities with World Bank projects**

**Maximize and sharpen investment throughout the hotspots**

**Ensure sustainable financing for conservation**



**The Critical Ecosystem Partnership Fund**

**Protecting Nature's Hotspots  
for People and Prosperity**

[www.cepf.net](http://www.cepf.net)