

EDEN TO ADDO

CORRIDOR INITIATIVE

Peak Formosa: Mike Kemp

E - newsletter

Winter 2007

A Wintry update - The World Bank visits the Sothern Crags Conservancy

This is not a newsletter to herald the winter but to say goodbye to it. Everywhere we look there's evidence of new life, a vitality and freshness in the air that hints at spring. So what have we been up to for the last 3 chilly months? Our most exciting achievement in the on-going success of the Southern Crags conservancy was a visit by representatives of the World Bank who were in the area as part of the mid term review of the Garden Route Initiative. When discussing where to take them as part of a field trip to show how stewardship is working in the landscape there was unanimous agreement that they should go the Southern Crags and the snow-covered peak that adorns this newsletter was what greeted them when they arrived. It was a good opportunity for Eden to Addo to showcase the partnership that we've developed with the landowners and with CapeNature and to show off the fruits of our labours to potential funders. Well Done to Mike Kemp, Chairperson of the Conservancy for his dedication and determination (read: stubbornness). At their AGM shortly afterwards there was renewed enthusiasm from members who truly love and appreciate where they live and who we will continue to assist in any way we can.

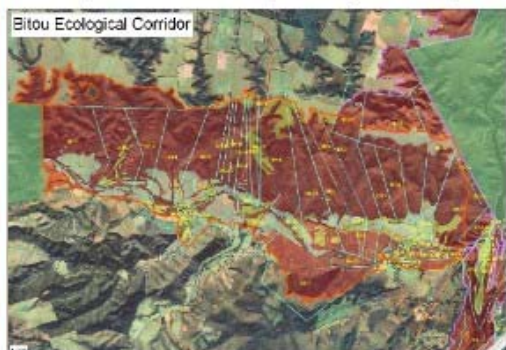


Progress in other sites - Indalo, Bitou, Middle Keurbooms



Sticking to our formula of drafting alien vegetation clearing plans as an introduction to corridors and as a way of seeing what's on the ground we completed a plan for Indalo Conservancy and started a botanical survey that has revealed some beautiful plants and flowers. Keurboom's Conservancy was registered with CapeNature and we have started to map their alien vegetation too, but the biggest achievement has been the completion of an alien vegetation plan for the Bitou Corridor. Approximately 2500ha's of privately owned land, the Bitou Valley is situated in a priority corridor linking Whiskey Creek to SANParks. A substantial task, the plan was completed with professional assistance from Sue Swain, the GRI's new Stewardship extension officer. It was presented to landowners at the end of July and we are currently discussing the formation of conservancies as the next step to consolidating the corridor. The Bitou corridor is pivotal in linking Indalo to the Southern Crags and ultimately to the Middle Keurboom's conservancy for an uninterrupted corridor of privately-owned protected land - watch this space for a new and exciting EZA project.

Many ways to map a weed



Mother of Millions (weed)

Hypoxys hererocalidea

Golden Orb web spider

Some people wonder why we spend so much time mapping alien vegetation. Well apart from being the 2nd biggest threat to biodiversity conservation (after fragmentation due to inappropriate development) it also represents a common language that we can all understand, everybody is affected by wattle and hakea and gum. In addition, the Department of Water Affairs and Forestry are committed to the cause and have agreed to allocate herbicide according to our management plans and to their policy. This contribution can add up to a substantial saving on the part of the landowner and is a key incentive for participating in the corridor.



At the CAPE partners conference in May Eden to Addo received an award for our contribution to Stewardship in the landscape and at the Fynbos Forum in August we were commended for having the smallest ecological footprint in attending the conference (largely because our budget doesn't allow for more than a bus ticket).

Questions or comments? E-mail pam@edentoaddo.co.za or call 044 3562825 or 0828750342 or go to www.edentoaddo.co.za



garden route initiative

Eden to Addo is a Non profit, private sector initiative working in partnership with the Garden Route Initiative, CapeNature and C.A.P.E.

