

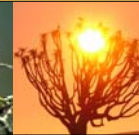
Succulent **Karoo** Ecosystem Programme

Improving linkages between CEPF and World Bank Operations

25th April 2005

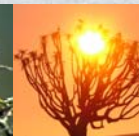
Owen Henderson

CRITICAL ECOSYSTEM
PARTNERSHIP FUND



Succulent **Karoo** Ecosystem Programme

A people
focused/bottom
up approach



Succulent Karoo Ecosystem Programme

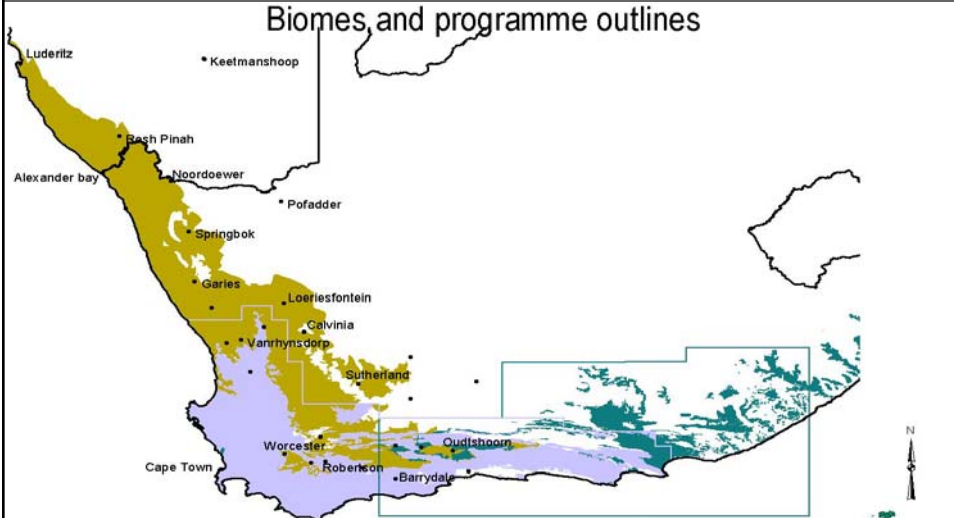
End result...

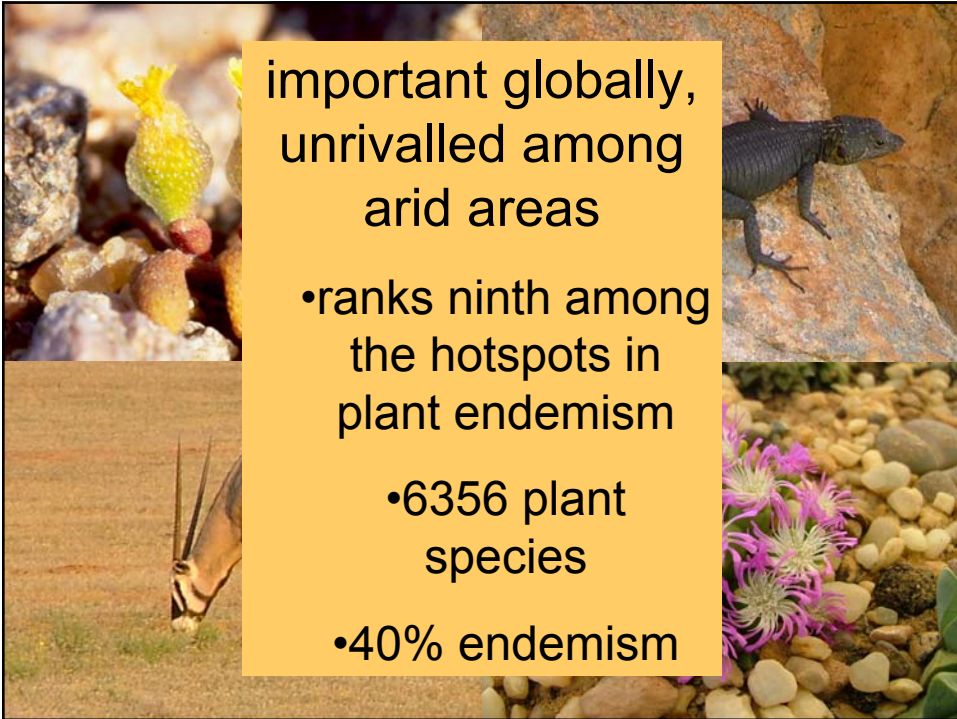
Achieving people focused conservation through strong partnerships and aligned resources



Succulent Karoo Ecosystem Programme

Biomes and programme outlines





important globally,
unrivalled among
arid areas

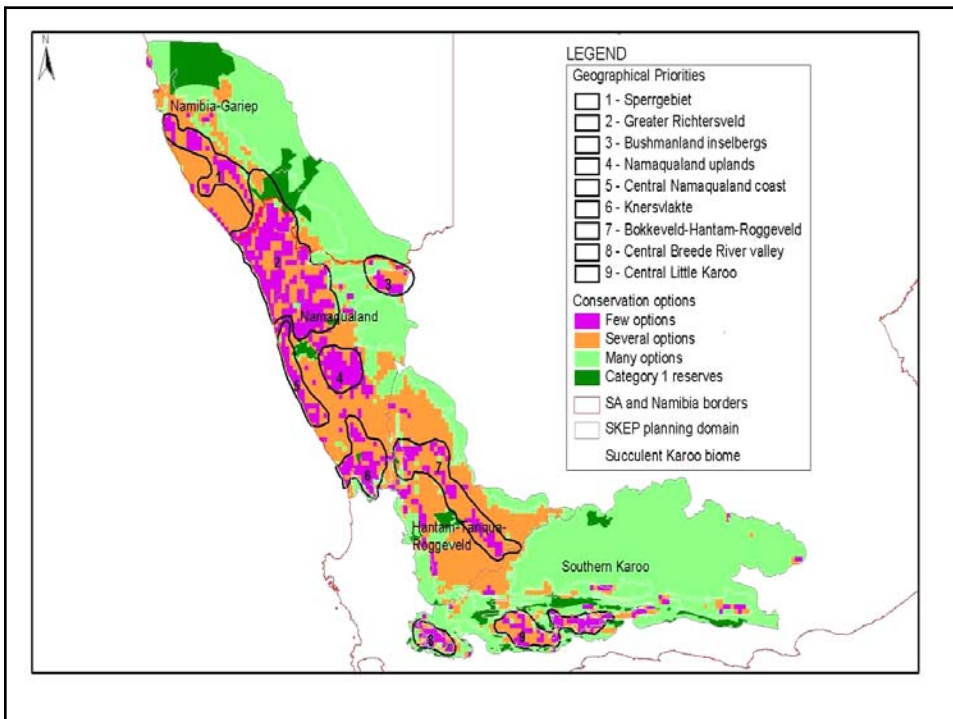
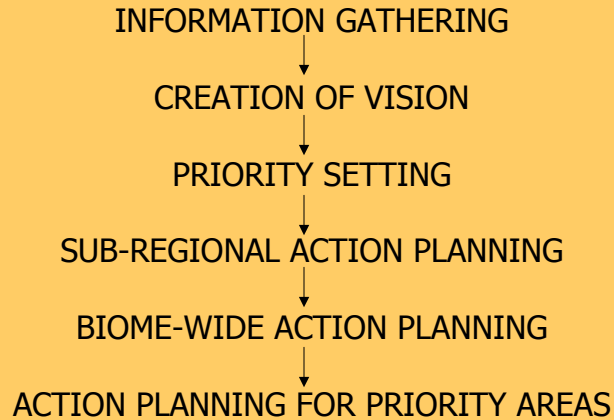
- ranks ninth among
the hotspots in
plant endemism
- 6356 plant
species
- 40% endemism

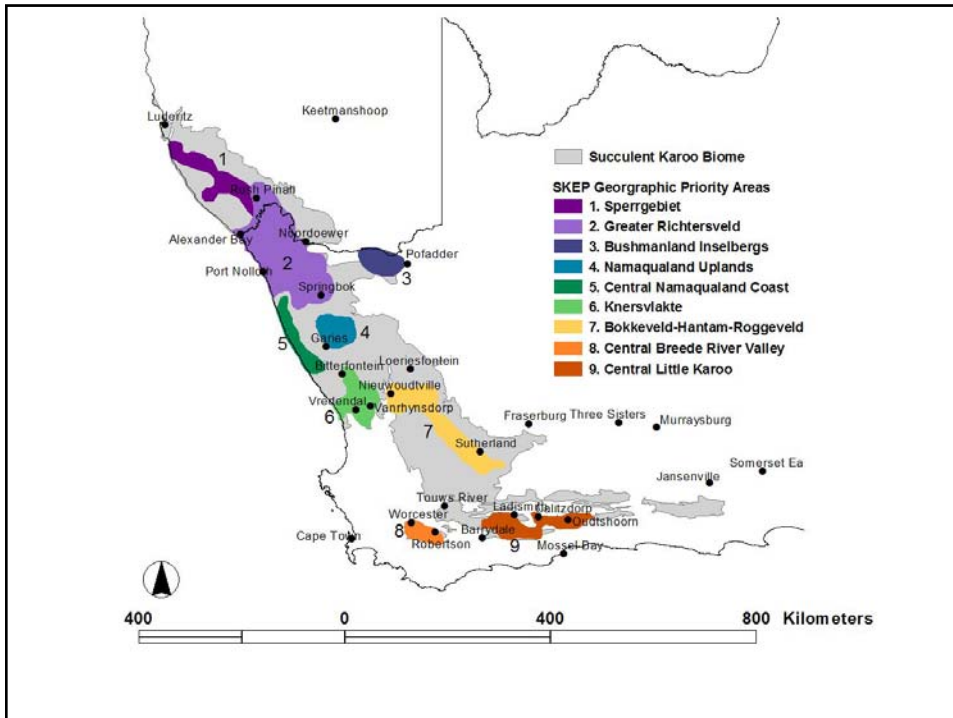


Threats...

Creating
opportunity for
engagement

SKEP...Participatory Process





moving to implementation

- National and local governance structures

- Decentralised co-ordination

- Co-ordinates stakeholders at priority level

- maintains on the ground approach

- one forum for partnerships developments

...empowers anchor projects to be successful

currently...from a negative perspective

- low capacity
- limited sharing of lessons
- few implementers
- limited time and resource



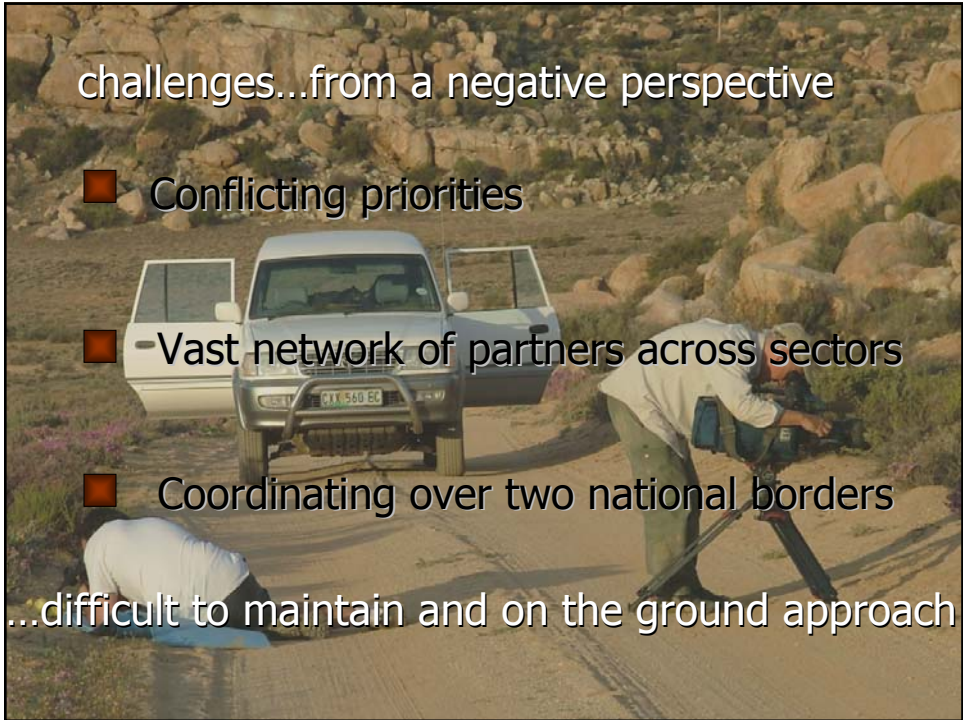
...chance for collaboration

Projects often has...

- low biodiversity outcome
- no M & E system
- lacked strong scientific and feasibility components
- not linked to target



...more strategic



challenges...from a negative perspective

- Conflicting priorities
- - Vast network of partners across sectors
- Coordinating over two national borders

...difficult to maintain and on the ground approach



currently...from a positive perspective

- well defined strategies
- strong scientific bases
- investment priorities
- committed implementing partners

...we know where we want to be

currently...from a positive perspective

- enabling legislation...
Biodiversity Act
- new institutions to implement
- awareness Succulent Karoo
and of SKEP

...stage is set for enabling implementation



current...from a positive perspective...

- Strong sectoral buy
- Phenomenal momentum
- Learning learn by doing
- testing a flexibility
new model

...mainstreaming of our conservation priorities



ideally...

- mainstreamed programme
- secure long-term sustainability
- collaborate through partnership
- align strategies
- strengthen governance structures

...maintain and on the ground approach



Succulent Karoo Ecosystem Programme



Maintain strong scientific basis, scale up communication, project development & implementation support



Funding directions...

- Expand protected area corridors through public-private-communal partnerships in geographic priorities
- Engage key industries in meeting conservation objectives identified in SKEP
- Retain and restore biodiversity in areas under greatest land-use pressure



Funding directions...

- Mainstream biodiversity priorities into land-use planning and policy-making
- Increase awareness of the unique value of the SKH at the local and national level
- Create capacity to catalyse the SKEP Programme





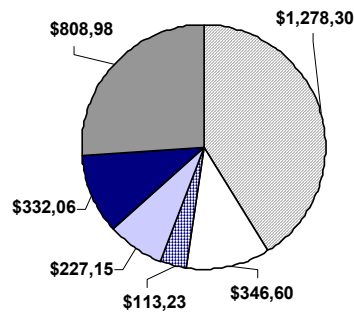
Highlights to date ...

- CU established
- Strategies per priority area
- Anchor projects designed
- Array of partnerships

...expanding capacity beyond CU

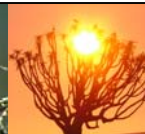
Succulent Karoo Ecosystem Programme

Chart 1. Approved Grants by Strategic Direction



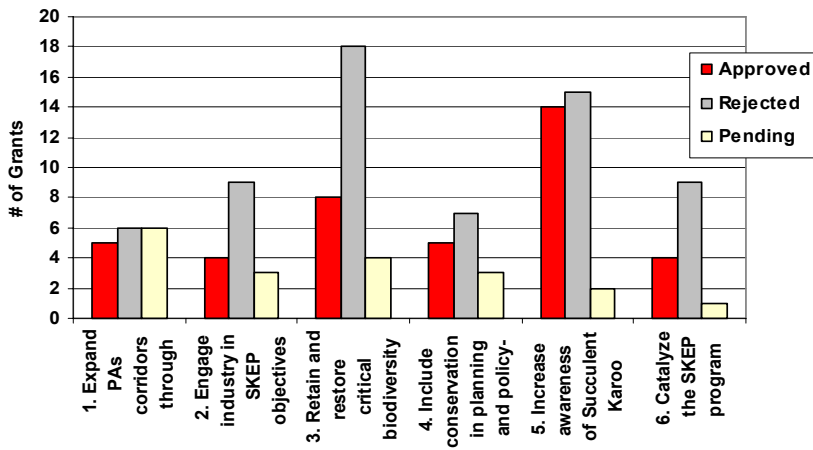
Total: \$3,106,355

- 1. Expand PAs corridors through partnerships
- 2. Engage industry in SKEP objectives
- 3. Retain and restore critical biodiversity
- 4. Include conservation in planning and policy-making
- 5. Increase awareness of Succulent Karoo
- 6. Catalyze the SKEP program



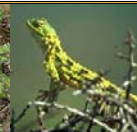
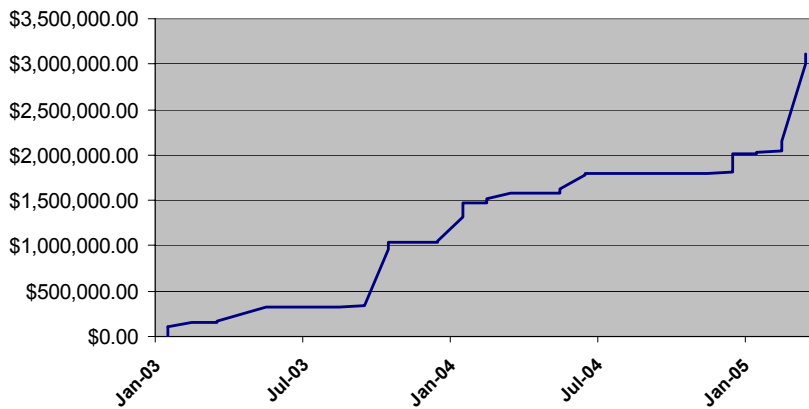
Succulent Karoo Ecosystem Programme

Chart 2. Portfolio Status by Strategic Direction



Succulent Karoo Ecosystem Programme

Chart 3. Combined Value of Grants Awarded



Key features to date...

- Always plan for implementation
- Build capacity
- Allows for transparency
- Bottom up
- Use local champions



Next set of opportunities...

- bridging conservation and development divide
- creating the alternatives
- ensuring long-term sustainability of the Programme...financially and with capacity

Ultimately achieving the SKEP vision...



Succulent **Karoo** Ecosystem Programme

"The people of the Succulent Karoo take ownership of and enjoy their unique living landscape in a way that maintains biodiversity and improves livelihoods now and into perpetuity."

