



# **Improving Linkages Between World Bank and CEPF Operations**

**LATIN AMERICA WORKSHOP  
AFRICA REGIONAL WORKSHOP**

**Luiz Gabriel Azevedo  
Brazil Country Sector Leader  
Environmentally and Socially Sustainable Development  
Medan – June 23, 2005**

# **Improving Linkages Between World Bank and CEPF Operations**

**Latin America Workshop  
Rio de Janeiro – January, 2005**



## **Working Group Recommendations**

---

- 1. Share information and collaborate where possible on key projects in the hotspots. Keep DC-based World Bank staff informed of CEPF progress to date, and key pipeline projects and strategies by regularly sharing standard communication / reporting tools with a larger subset of Bank staff.**
- 2. Develop hotspot specific action plans, including periodic meetings, consultations, and exchanges at key stages of the project cycle.**

## **Working Group Recommendations**

---

- 3. CEPF should engage the Sector Leader at the country level and other regional staff to increase operational involvement among the Bank and CEPF. Explore possible mechanisms to provide regional support to the Bank's team responsible for CEPF oversight.**
- 4. CEPF is targeting a key level of the conservation community not engaged by the World Bank – synergies need to be enhanced – the ecosystem profile is a valuable tool to do this.**

## **Areas where synergies between the Bank and CEPF could be profited from**

- **The Bank's work on indigenous people and CEPF work on conservation – particularly with protection of community lands.**
- **Projects involving the purchase of land.**
- **Bank's work on land-titling projects.**

## **Areas where CEPF could contribute to Bank activities**

- **Preparation of Bank programs such as forestry and ecosystem services.**
- **Key issues in the Bank's regional and country level discussions with actors such as the UNDP.**
- **Carbon sequestration.**
- **Indicators and safeguards in Bank projects, particularly those focused on infrastructure.**

## **Areas where CEPF could contribute to Bank activities**

---

- **Facilitating, and directly participating in, the consultation process of Bank projects.**
- **Providing information for economic analyses of ecosystem services .**
- **Providing indicators to the Bank on economic benefits.**
- **Presenting strategic lines regarding conservation.**

## **Areas where CEPF could contribute to Bank activities**

---

- **Providing a forum for stakeholder discussion.**
- **Promoting regional and sub regional initiatives.**
- **Encouraging incorporation of biodiversity economics in place of current traditional economics.**
- **Production of indicators and safeguards in Bank projects, particularly those focused on infrastructure.**

## **Areas where Bank could contribute to CEPF activities**

---

- **The Bank can provide a bridge between CEPF and governments and so amplify the CEPF's influence.**
- **With CEPF projects at the later stages of approval, Bank could be informed through the sector leaders and provide inputs.**
- **The Bank could help with sustainability of projects through providing advice.**

## **Areas where Bank could contribute to CEPF activities**

---

- **The Bank could lend weight to support key stages of CEPF negotiations with governments.**
- **Promoting the strategy and approach of CEPF where it could help other Bank initiatives.**
- **The Bank could look at possible synergies between CEPF activities and other programs (e.g. PPG7, Carbon Sequestration, etc.)**

## **Key Recommendations for How to Improve World Bank and CEPF Operations**

- **Institutional Adjustment (Modifications to the Bank/GEF and CEPF).**
- **Communication – improving information flows to actors within the Bank and CEPF is crucial**
- **Information and Knowledge Sharing**

## **Initial Outcomes**

---

- **Start the preparation of a full size GEF Project in the State of Espirito Santo in partnership with a CEPF Grantee (Instituto Bio-Atlantico)**
- **Start the preparation of a MSP GEF with the Mico Leao Dourado Foundation – CEPF Grantee in Rio de Janeiro**
- **Revise the implementation plans for the GEF Project in Rio de Janeiro to enhance synergies with CEPF Projects in the region.**

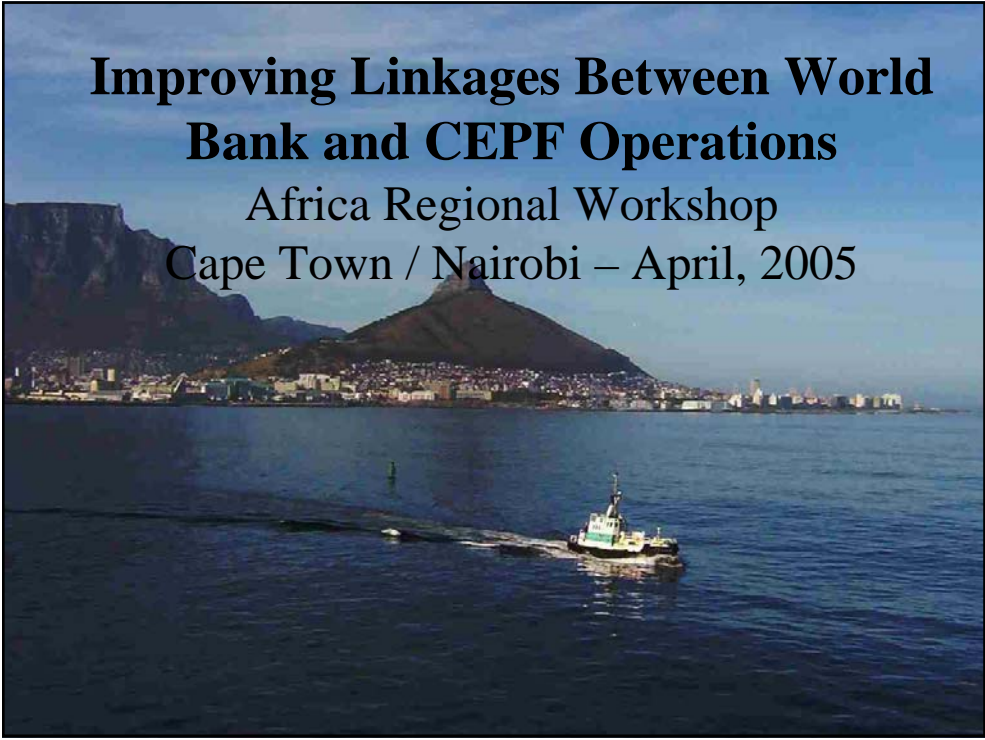
## Initial Outcomes

---

- Review of the Parana GEF Biodiversity Project to establish a small grants program similar to CEPF;
- Two brown bag lunches have been organized in the WB HQ to discuss the CEPF/WB interfaces.



**End of the Latin America Section.**



# **Improving Linkages Between World Bank and CEPF Operations**

## **Africa Regional Workshop**

**Cape Town / Nairobi – April, 2005**

## **The World Bank Program in Africa**

---

- **Country Strategies guide the World Bank programs in a given country.**
- **ESSD has recently restructured – consolidating rural development, environment, and social development. Incentives for more collaboration among families.**
- **There is a challenge to integrate environmental concerns into the PRSPs.**
- **There seems to be more fragmentation in the World Bank program in Africa than in Latin America.**

## **Regional Recommendations: Institutional Arrangements**

---

### **CEPF**

- **Develop mechanism to provide input into PRSPs, CASs, and World Bank projects.**
- **Consider the “branding” of CEPF at the global hotspot and country level, with particular attention to minimizing the perception that CEPF is CI-centered.**
- **Encourage NGO partners to use CEPF as a tool for communication with the World Bank on environmental issues.**

## **Regional Recommendations: Institutional Modifications**

---

### **World Bank**

- **Increase country management awareness and involvement in CEPF – discuss incentives for collaboration and participation.**
- **Utilize CEPF partnership as an effective mechanism for collaborating and communication with civil society.**
- **Develop mechanism to provide input into ecosystem profiles and to collaborate to CEPF projects.**

## **Regional Recommendations: Communication**

---

- **Develop mechanisms/engagement strategy at the global, hotspot and country levels. This could include briefings between CEPF coordination unit and World Bank country teams, as well as annual meetings.**
- **Identify and share key contacts within CEPF and the World Bank.**
- **Develop and/or share existing mechanisms to communicate about upcoming and newly approved CEPF and World Bank projects.**

## **Regional Recommendations: Knowledge Sharing**

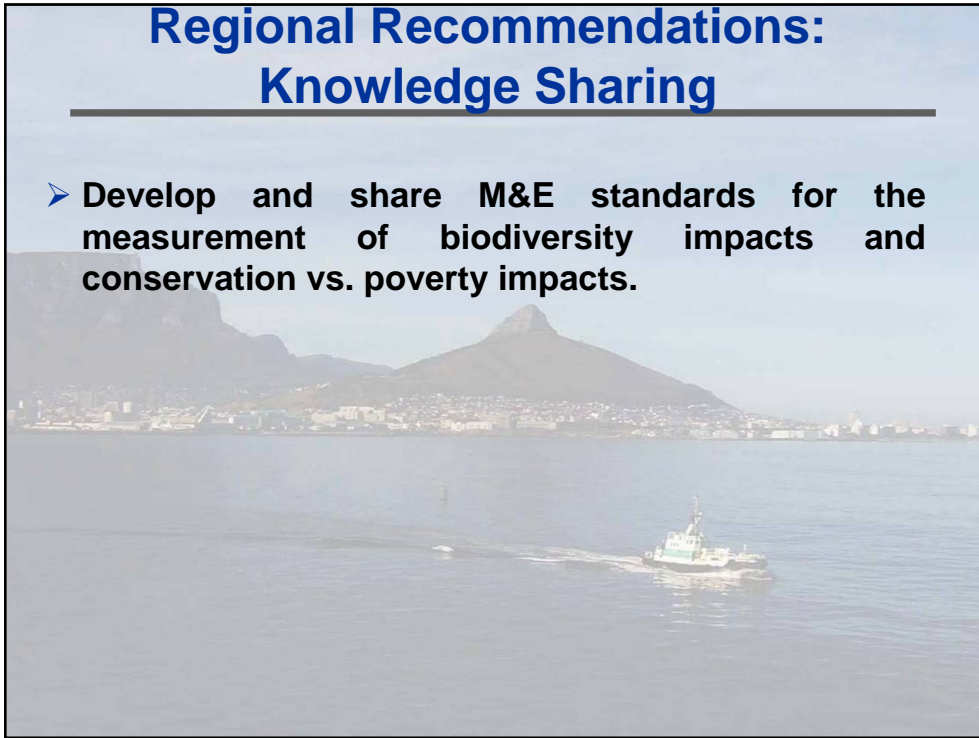
---

- **Increase the dissemination of lessons learned between the World Bank and CEPF.**
- **Continue discussions / analytical work about the impacts of conservation on poverty reduction, both between partners and within CEPF.**
- **Utilize CEPF partnership as an effective mechanism for collaborating with a wide range of stakeholders at local level.**

## **Regional Recommendations: Knowledge Sharing**

---

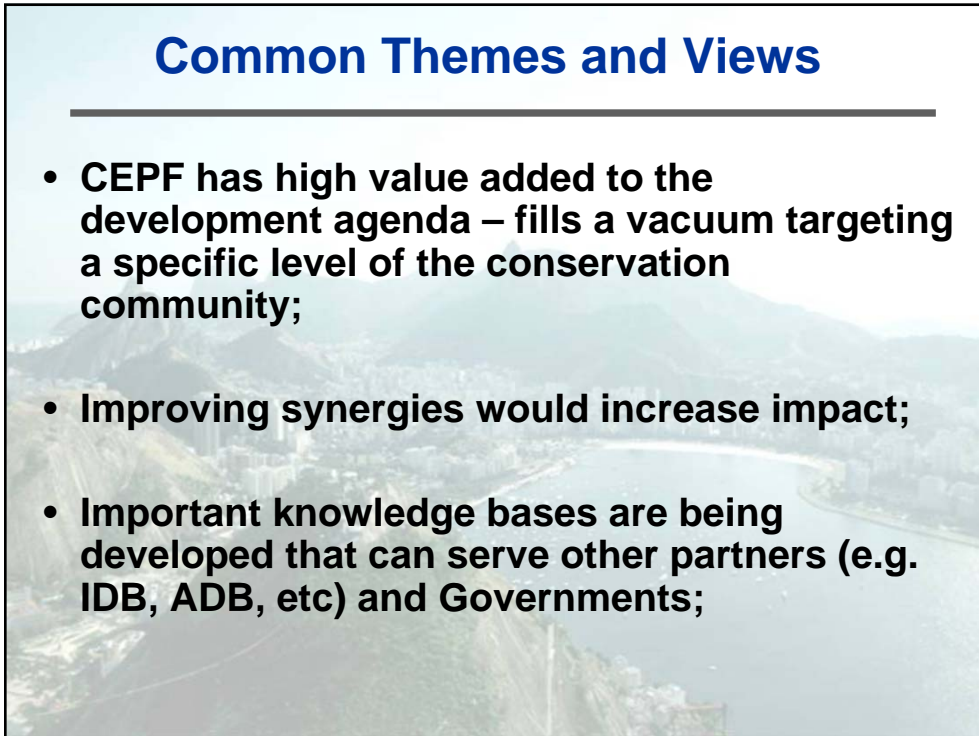
- **Develop and share M&E standards for the measurement of biodiversity impacts and conservation vs. poverty impacts.**



## **Common Themes and Views**

---

- **CEPF has high value added to the development agenda – fills a vacuum targeting a specific level of the conservation community;**
- **Improving synergies would increase impact;**
- **Important knowledge bases are being developed that can serve other partners (e.g. IDB, ADB, etc) and Governments;**



## Regional Differences in Focus

---

- **LAC**
  - More focus on the rights of indigenous peoples;
  - Interest in DPLs and SALs – policy related activities;
  - Project involving the purchase of land;
  - Carbon and CDMs;
- **Africa**
  - Stronger focus on poverty and livelihoods – links between conservation and poverty reduction;
  - Social economic and cultural differences amongst countries and hotspots are more relevant and need to be taken into account;

## How to Improve Linkages

---

- **Three main areas listed in both the AFR and LAC Regions:**
  - Communication
  - Knowledge Sharing
  - Institutional Arrangements (Incentives Frameworks)

