

Southern Mesoamerica Portfolio

- Nicaragua
- Costa Rica
- Panama

Evolution of Southern Mesoamerica



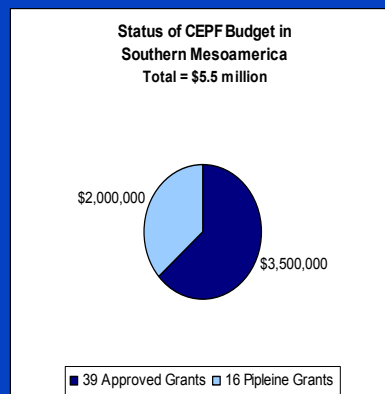
- Mid – 2001 - Portfolio Preparation
 - Identification of biological priorities
 - Threats assessment
 - Prospective investments in region
- Stakeholder consultations throughout the region
- Development of CEPF niche and strategy



- December 2001 – Donor Council Approval
- Early 2002 – CEPF outreach
 - Meetings with NGOs, universities, research institutes, governments, and communities throughout the region.
- Mid 2002 – Active submission and reviews of LOIs, co-design of grants, processing proposals, and contracting.

Southern Meso – Current Status

- Active Grantmaking
 - 39 approved grants for \$3.5 million
 - 16 pipeline grants for \$2.0 million.
- Implementation
 - Technical assistance
 - Grantee exchange visits
 - Joint planning meetings
- Monitoring
 - Progress reports
 - Site visits



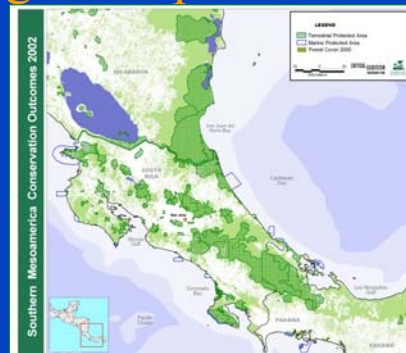
Investment portfolio

- Focused on the largest and most diverse protected areas and biological corridors.
- \$5.5 million, started 2002
- Three corridors
- 2.2 million hectares protected, 33 PA, 15 municipalities, 11 indigenous territories, 200+ communities.



Portfolio Operating Principles

- Targets the most critical areas of Mesoamerican Biological Corridor.
- Strengthens alliances and coalitions with government participation.
- Promotes civil society participation in sustainable development and conservation projects in key protected areas and buffer zones.
- Encourages complementary funding for sustainability.



Strategic Directions

1. Strengthen key conservation alliances and networks within integral corridors.
2. Connect critical areas through economic alternatives
3. Promote awareness and conservation of flagship species
4. Support improved management of key protected



1. Strengthen key conservation alliances and networks within integral corridors.

- Eight binational, national, and local alliances, with special emphasis on private/public partnerships.
 - TOB Ecorregional Alliance (CR-P).
 - Five coalitions: S.J-La Selva, Osa Peninsula, SE Nicaragua, Talamanca-Caribe Alliance, ADATA.
 - Conservation coffee alliance (Starbucks, USAID, CI, local partners).
 - Fund.Corcovado w/hotel operators and Ministries of Env and Security.
- Through alliances, foster development and implementation of local and regional action plans.



2. Connect critical areas through economic alternatives

- Projects developed in priority areas to promote connectivity on 1.2 million hectares.
- Grants support ecotourism, conservation coffee, agroforestry, reforestation, organic agriculture, environmental education.
- Grants complement rural development initiatives.
 - Payments for environmental services in CR,
 - WB and UNDP/funded projects.



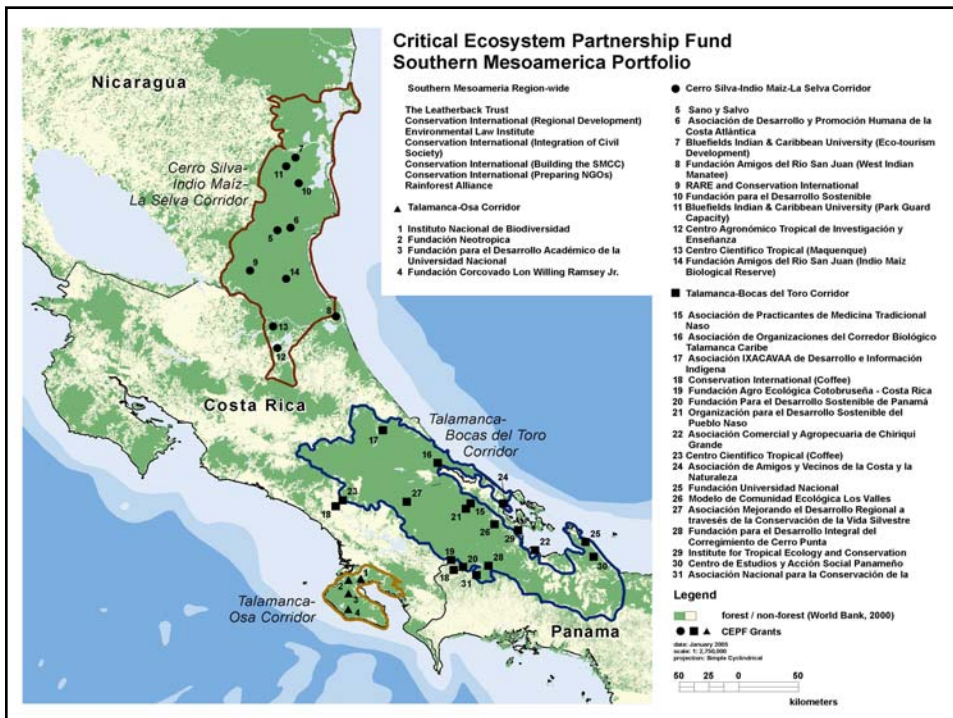
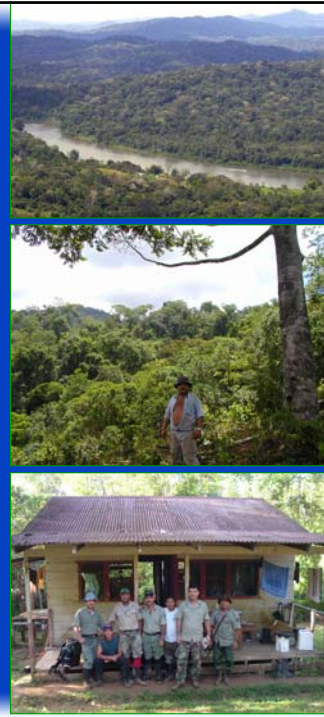
3. Promote awareness and conservation of flagship species

- Improve scientific understanding of globally threatened and endangered species and flagship species (tapir, green macaw, manatee).
- Promote environmental education through coalitions to reach strategic located communities.

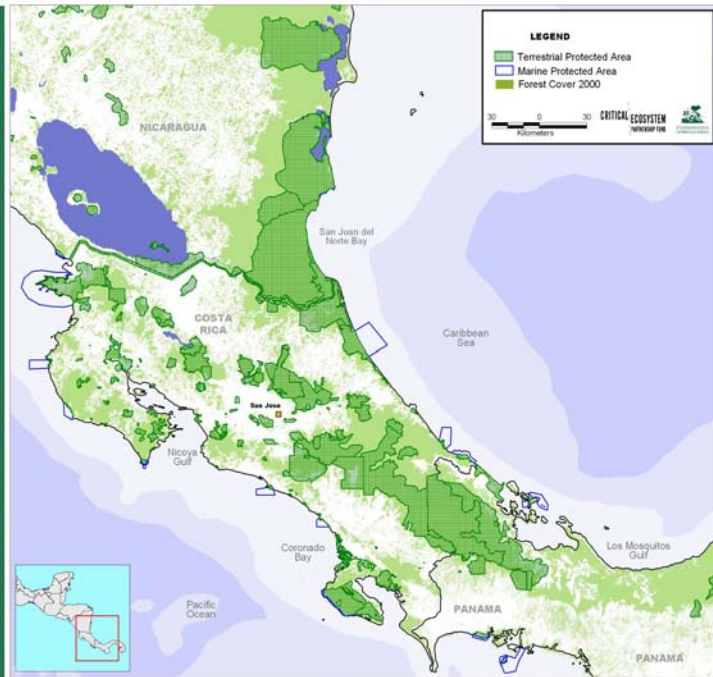


4. Support improved management of key protected areas

- Improve management of key PAs in the Mesoamerican Biological Corridor, covering 1.5 million has (Indio Maiz, Cerro Silva, La Amistad, Corcovado).
- Establish four new PA totalling 492,000 hectares, including new areas managed by indigenous groups (Ngobe/Rama) and Maquenque NP.
- Leverage financial resources to support private conservation (payment for env't services in Osa and Talamanca).

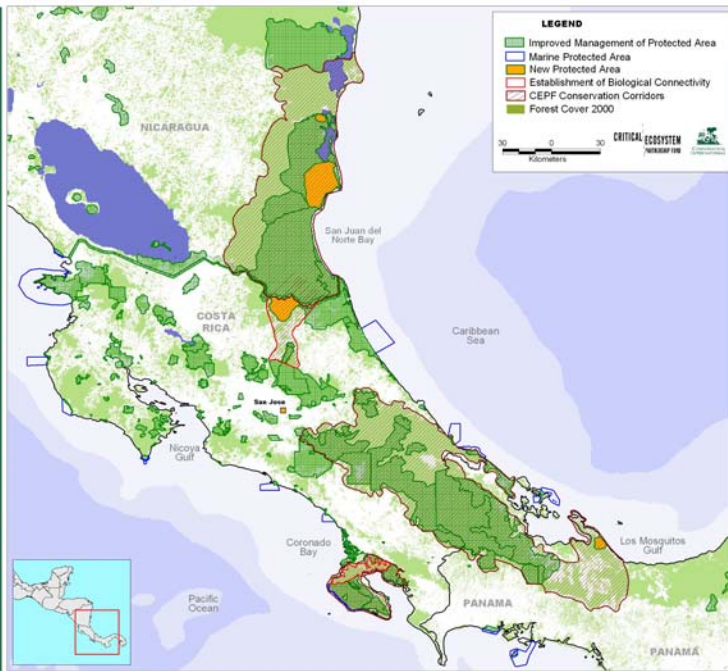


Southern Mesoamerica Conservation Outcomes 2002



CRITICAL ECOSYSTEM PARTNERSHIP FUND

Southern Mesoamerica Conservation Outcomes 2007



CRITICAL ECOSYSTEM PARTNERSHIP FUND

Role of Coordination Unit



- Ensure CEPF strategy successfully achieved in the field.
- Assist organizations with all CEPF grant making processes.
- Build partner capacity to conceptualize, design, budget and monitor projects.
- Ensure synergy among grantees, government agencies and other development agencies.
- Encourage and seek funds for leveraging.

CRITICAL ECOSYSTEM
MARINE SHIELD FUND

Portfolio Highlights

- 39 grants total \$3.5 million.
- 75% to local and national NGOs, community groups, universities, and research institutes.
- Enhanced results by supporting 8 coalitions/alliances.
- Over 200 indigenous and non-indigenous communities benefit from grants.
- 12 grants to directly benefit indigenous people.



Co-financing for sustainability ...

- 95% of grants have leveraged matching funds and/or in-kind contributions.
- Co-financing from 8 government agencies, 9 international donors, and in-kind and monetary contributions from 26 local groups.
- Total leveraged to date: \$16.6 million
 - CI-TNC Osa Campaign \$12 M
 - CRUSA Osa Campaign \$3 M.
 - Gov. Costa Rica \$500 k.
 - Starbucks-USAID-CI \$387 k
 - UNDP \$93 k
 - Danida \$80K
 - CBM \$30 K
- Additional \$900K in leveraging for pipeline projects.
- Potential \$10 million from the GEF.



CRITICAL ECOSYSTEM
PARTNERSHIP FUND

Highlights of results

- Capacity of 70+ local and national NGOs increased to design and manage projects, and to access other funds.
- Over 200 communities achieving sustainable development and conservation results
- Over \$16 million leveraged to date.
- Indio Maiz management plan finalized early 2005 to guide future DANIDA, CEPF, and other investments.
- Eco-regional action plan for TOB near approval to guide investments for NGOs, gov't, and donors.
- Hunting abated in Corcovado National Park after years of pressure.
- 34 NGOs in Nicaragua establish a coalition to coordinate their actions toward common goals.
- Strategy adopted in CR and PA for the Conservation Coffee Alliance (Starbucks).

CRITICAL ECOSYSTEM
PARTNERSHIP FUND

Collaboration with the Bank and GEF

- Key projects:
 - Bank: MBC, CBMAP, CBN
 - UNDP: Small Grants Program
- Co-funding initiatives of mutual interest and priority.
- Technical participation in ecoregional plans developed with Bank projects.



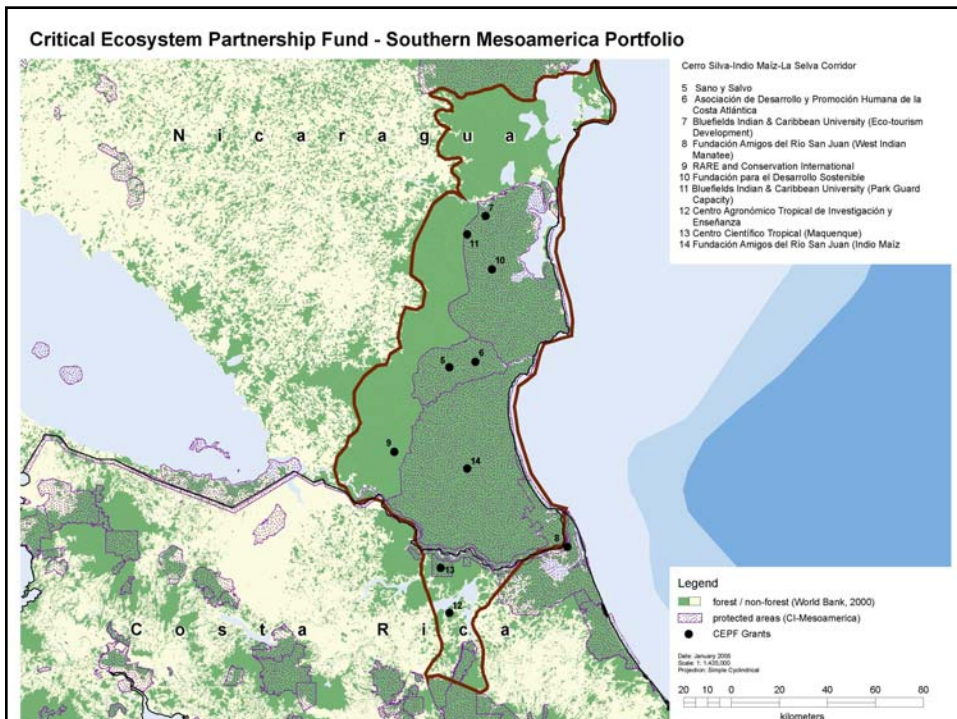
Potential Opportunities for Cooperation

- Use the Ecoregional Action Plan to guide conservation investments in Talamanca-Osa and Talamanca-Bocas del Toro Corridors.
- Collaborate on the \$10M Block Grant proposal for Costa Rica's protected areas system currently in the GEF pipeline.
- Leverage funds from the IDB for sustainable tourism in PA, in collaboration with the GEF Block Grant.
- Continue collaboration throughout the region with the MBC.

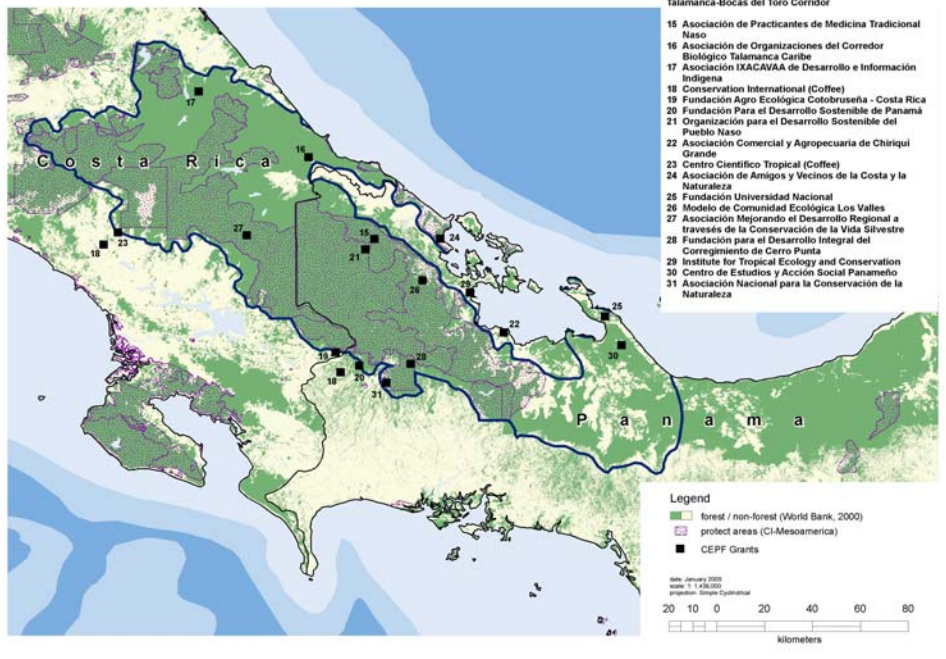
Muchas gracias.....

Muito obrigado....

CRITICAL ECOSYSTEM
PARTNERSHIP FUND



Critical Ecosystem Partnership Fund - Southern Mesoamerica Portfolio



Critical Ecosystem Partnership Fund - Southern Mesoamerica Portfolio

