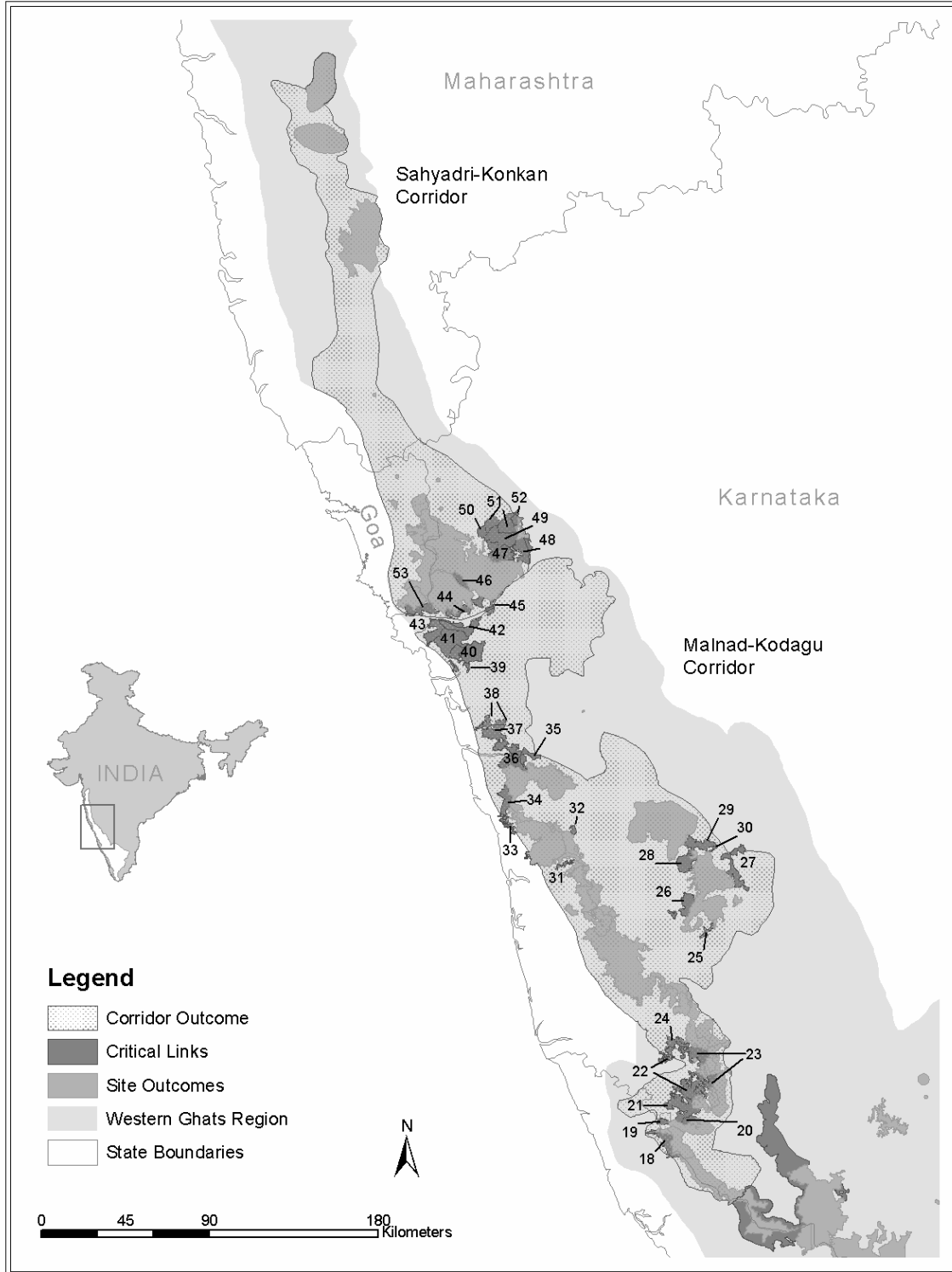


Figure 8. Corridor Outcomes and Critical Links in the Northern Western Ghats



Source: Reserve Forest boundaries from French Institute Forest Maps of South India: (Pascal et al. 1982a, Pascal et al. 1982b, Pascal et al. 1984). Protected Area boundaries from Indian Institute of Public Administration, New Delhi (www.ipaindia.org). Political boundaries from Environmental Systems Research Institute, Inc.- Digital Chart of the World.

Extended Legend for Figure 8. Corridor Outcomes and Critical Links in the Northern Western Ghats

Critical Links:

Critical Links	
Malnad- Kodagu Corridor	18. Padinalknad RF west of Talakaveri WLS
	19. Panathadi RF
	20. RF south of Sampaji
	21. Sulya Forest Range – Sampaji, Todikana & Pumale RFs
	22. Panja Forest Range – Devchalla, Balpa & Extn., Yenakal, Aranthakallu, Kunthuru & Padnuru RFs
	23. Subrahmanya Forest Range – Nalkur, Subrahmanya, Kombar ⁺ , Mujur ⁺ & Konaje RFs
	24. Uppinangadi Forest Range – Porkal & Kodimbala RFs
	25. Masakali RF
	26. Kuskal & Megaramakki RFs
	27. Tarikere Forest Range – Timmapura, Tyagadabaji, Gurupura, Karkuchi & Hadikere West RFs
	28. Northern Cardamom Hills RF ⁺
	29. Umblibail Forest Range – Umblibail, Choranyedahalli & Kakanhosudi RFs
	30. Tamadihalli RF
	31. Doddinamane RF
	32. Kodasseri RF – Chalakudi FD
	33. Baidur Forest Range – Guruvanakote, Baidur, Kadike & Karnigadde RFs
	34. Bhatkal Forest Range – RF numbers 164-166-184 [^]
	35. Jog RF
	36. Gersoppa Forest Range – RF numbers- 152, 153, 175, 176, 177, 178, 179 [^]
	37. Honavar Forest Range – RF numbers- 148, 149, 150, 172, 173, 174 [^]
	38. Kumta Forest Range – RF numbers- 147, 149 [^]
	39. Hiregutti Forest Range – RF number – 167 [^]
	40. Mastikatte Forest Range – RF numbers- 24, 132, 133, 159 [^]
	41. Ankola Forest Range – RF numbers- 137, 140, 157, 158, 165, 166 [^]
	42. Kadra Forest Range – RF numbers- 115, 116, 117, 138, 139 [^]
	43. Karwar Forest Range – RF numbers- 117, 118, 119, 139, 140 [^]
Sahyadri-Konkan Corridor	44. Kadra Forest Range – RF numbers- 89, 114, 143 [^]
	45. Vajralli Forest Range – RF number- 26 (southern part) [^]
	46. Kumabharwada Forest Range - RF number- 35 [^]
	47. Virnolli Forest Range - RF numbers- 2 (northern part), 3 [^]
	48. Sambrani Forest Range - RF numbers – 9, 101 [^]

	49. Dandeli Forest Range - RF numbers – 5,6 [^]
	50. Jagalbet Forest Range - RF number – 37 [^]
	51. Barchi Forest Range - RF numbers- 6, 7 [^]
	52. Haliyal Forest Range - RF number- 105A [^]
	53. Gopshitta Forest Range - RF numbers – 109, 110, 111, 113, 142 [^]

+ Also a site outcome

[^] As represented in the French Institute Forest Maps of South India –Shimoga (Pascal et al. 1982b) and Belgaum-Dharwad Sheets (Pascal et al.1984).

** Only part of this forest administrative unit was identified as a critical link, due primarily to the presence of human settlements within the area.*