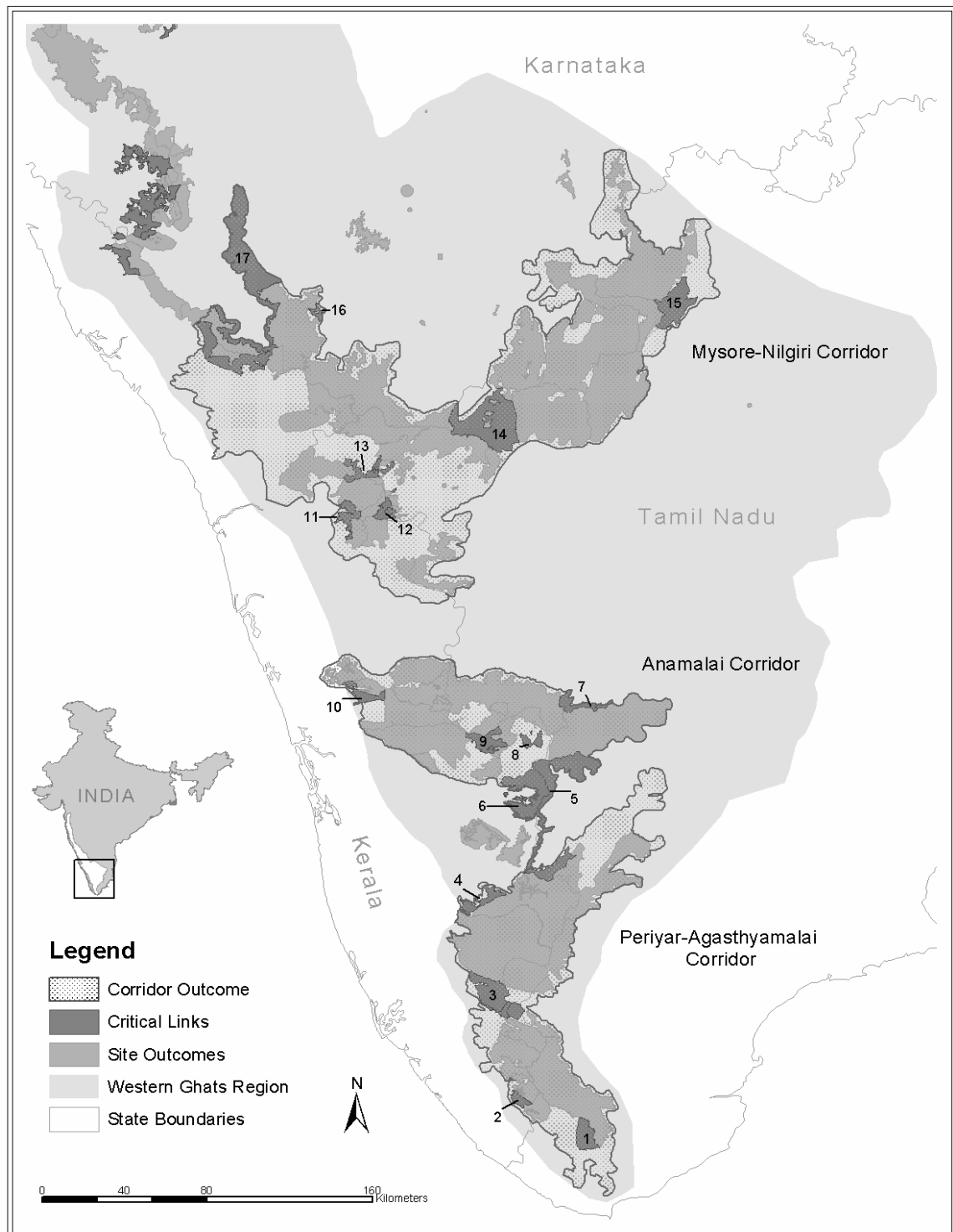


**Figure 7. Corridor Outcomes and Critical Links in the Southern Western Ghats**



Source: Reserve Forest boundaries from French Institute Forest Maps of South India: (Ramesh et al. 1997b, Franceschi et al. 2002, Pascal et al. 1992, Pascal et al. 1982a). Forest Division boundaries from the GIS database of the Asian Elephant Research and Conservation Centre, Bangalore ([www.asiannature.org/home.html](http://www.asiannature.org/home.html)). Protected area boundaries from the Indian Institute of Public Administration, New Delhi ([www.iipaindia.org](http://www.iipaindia.org)). Political boundaries from Environmental Systems Research Institute, Inc.- Digital Chart of the World.

**Extended Legend for Figure 7. Corridor Outcomes and Critical Links in the Southern Western Ghats**

Critical Links	
Periyar-Agasthyamalai Corridor	1. Northern Virapuli RF
	2. Agasthyavanam Biological Park
	3. Secondary moist deciduous forests of Ariankavu and Achankovil RFs
	4. Ranni RF* - Kottayam FD
Anamalai Corridor	5. Theni FD <sup>+</sup>
	6. Northern Cardamom Hills RF <sup>+</sup>
	7. Andipatti RF, P.V. Valley RF (Northern part) and Oliyanutti Odai RF (Northern part)
	8. Pullardi Shola, Idivara Shola and Tirthalar RF
Mysore-Nilgiri Corridor	9. Anaimudi RF
	10. Kodasseri RF – Chalakudi FD
	11. Old Amarambalam RF
	12. Kundah RF <sup>+</sup>
	13. Nilgiri Peak RF, Mukurthi Lake RF and evergreen and moist deciduous forests on adjoining private lands to the north and west.
	14. Talaimalai RF <sup>+</sup>
	15. Bevanurmalai RF and extensions, Pennagram RF and extensions, Gutturayan RF and Voddapatti RF
16. Sollepur RF	
	17. Brahmagiri-Nagarhole link

\* Only part of this forest administrative unit was identified as a critical link, due primarily to the presence of human settlements within the area.

+ Also a site outcome