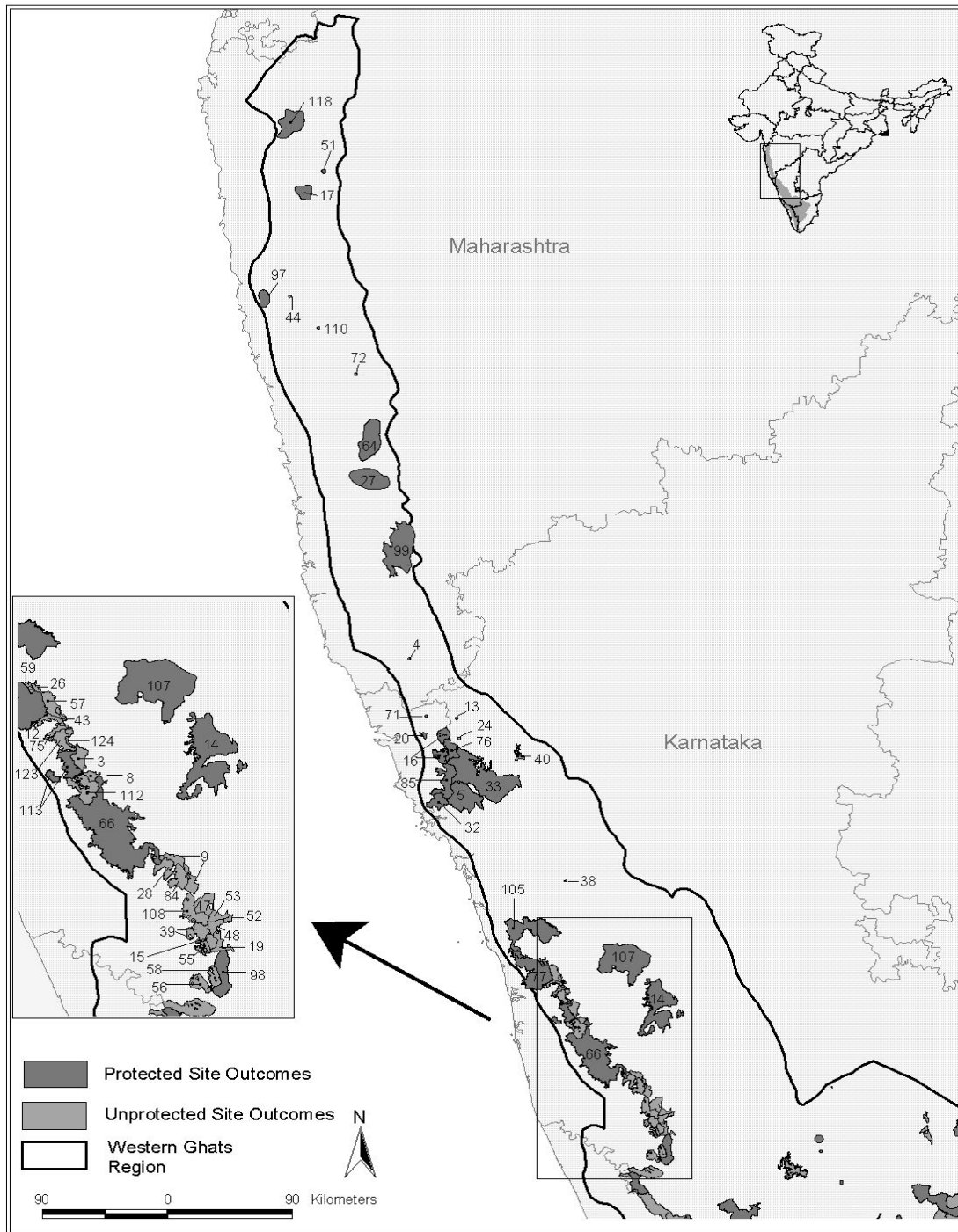


Figure 6. Full Set of Site Outcomes for the Northern Western Ghats



Source: Reserve Forest boundaries from French Institute Forest Maps of South India: (Pascal et al. 1982a, Pascal et al. 1982b, Pascal et al. 1984). Protected Area boundaries from Indian Institute of Public Administration, New Delhi (www.iipaindia.org). Political boundaries from Environmental Systems Research Institute, Inc.- Digital Chart of the World.

Extended Legend for Figure 6. Site Outcomes for the Northern Western Ghats

3. Agumbe RF	53. Kemphole RF
4. Amboli	55. Kiddu RF
5. Anshi NP	56. Kilarmale RF
8. Balahalli RF	57. Killandur RF
9. Balur RF	58. Kiribag RF
12. Baregundi RF	59. Kodachadri RF
13. Barpede Cave	64. Koyna WLS
14. Bhadra WLS	66. Kudremukh NP
15. Bhagimalai RF	71. Madei WLS
16. Bhagwan Mahaveer WLS	72. Mahabaleshwar
17. Bhimashankar WLS	75. Metkalgudde RF
19. Bisale RF	76. Molem NP
20. Bondla WLS	77. Mookambika WLS
24. Castle Rock - Bhimgad forests	84. Neriya RF
26. Chakra RF	85. Netravalli WLS
27. Chandoli WLS	97. Phansad WLS
28. Charmadi RF	98. Pushpagiri WLS
32. Cotigao WLS	99. Radhanagari WLS
33. Dandeli WLS	105. Sharavathi WLS
38. Gudavi WLS	107. Shettihally WLS
39. Forests of Gundia-KN	108. Shiradi Shisale RF
40. Haliyal RF	110. Sinhgarh
43. Hulikal RF	112. Someshawara RF
44. INS Shivaji- Lonavala	113. Someshwara WLS
47. Kabbinala RF	118. Tansa WLS
48. Kagneri RF	123. Tombattu RF
51. Kalsubai- Harishchandragarh WLS	124. Varahi RF
52. Kanchankumari RF	